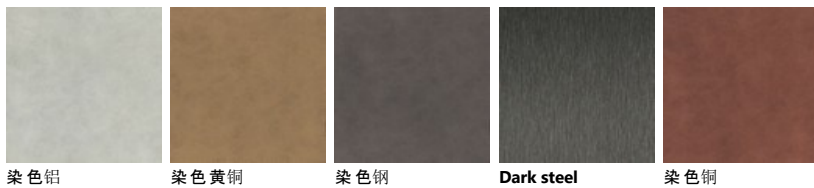


Palette_Colori 厨房 MIA by Carlo Cracco

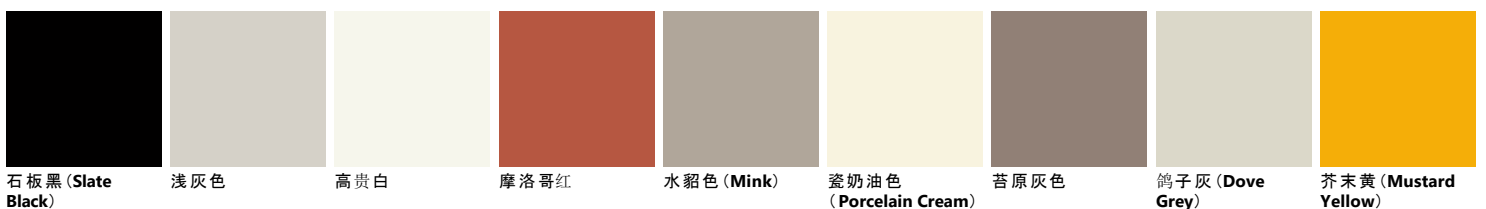
三聚氰胺饰面



金属效果烤漆



哑光烤漆





月亮蓝 钛灰色 米色 湖蓝 (Blue Lagoon) 嫩粉色 (Powder Pink) 铁灰色 宝石红 (Ruby Red) 矿石绿 芦荟绿



苍鹭灰 铁锈色 龙舌兰蓝 火山灰 珊瑚红 水鸭绿 Matera灰

亮光烤漆



石板黑 (Slate Black) 高贵白 苍鹭灰 瓷奶油色 (Porcelain Cream) 苔原灰色 摩洛哥红 水貂色 (Mink) 浅灰色 鸽子灰 (Dove Grey)



芥末黄 (Mustard Yellow) 月亮蓝 钛灰色 米色 湖蓝 (Blue Lagoon) 嫩粉色 (Powder Pink) 铁灰色 宝石红 (Ruby Red) 矿石绿



芦荟绿 铁锈色 龙舌兰蓝 火山灰 珊瑚红 水鸭绿 Matera灰

饰面



Ulster 胡桃色 皇家核桃色 (Royal Walnut) Dune 橡木 麦色橡木 煤色橡木 日落胡桃色 (Sunset Walnut) 柞蚕胡桃色 (Tussah Walnut) 桉木 Saxony 胡桃色

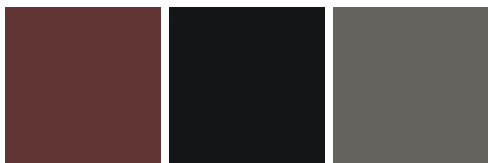


Coffee 橡木 Graphite 橡木

Fenix



Kos 白 Antrim灰 Comodoro绿 澳灰 (Grigio Bromo) Fes蓝 Ottawa Beaver Ephesus 灰 Orinoco 可可 Malé 白



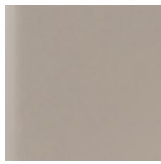
Jaipur红 Ingo 黑 伦敦灰

玻璃



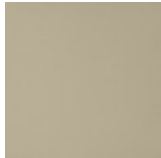
Stopsol Chiaro

玻璃



Stopsol Chiaro

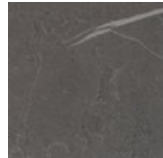
Matt laminate



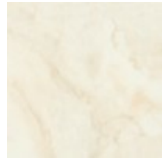
Urban Gold



Urban Bronze



灰石



Calacatta

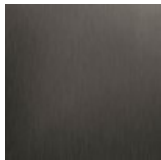


Statuario



Urban Steel

钢



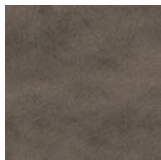
Dark steel

钢



钢

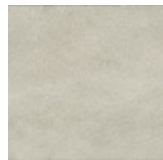
Biomalta



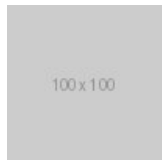
Granada 泥



Delhi 粘土色



Lima 粘土色



Matera Scav900



Shanghai

MIA Laminato Strips Bordo ABS



Urban Steel



Urban Gold



Urban Bronze